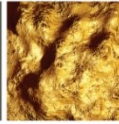


Gowest



JOB POSTING

Chief Mine Engineer Gowest Gold Inc.

Company:

Gowest Gold Ltd., a Canadian junior gold mining company, has moved into underground development of its 100% owned, Bradshaw Gold Deposit, located North East of Timmins, Ontario, Canada.

Job Description:

The chief mining engineer will report to the Director of Mining and Projects. The main responsibility is the coordination and delivery of all engineering services to the mine including: optimized long and short-term mine plans, design and schedules; layouts, surveying control; cost control and coordination of construction projects; coordination of central and external site technical resources. This position will be also accountable for ensuring that technical systems, processes and standards are consistent with standard mining industry practices.

Requirements and Qualifications:

- Strong leadership skills, energy and drive are critical.
- Extensive track record of engineering leadership and technical success in mining environments.
- Precious metals with underground experience a major asset.
- B.Sc.in mine engineering or an associated discipline.
- P. Eng is a requirement
- This is not a FIFO and relocation near the mine site is a must

Gowest Gold is an equal opportunity employer and will provide a competitive remuneration package. Applicants must be eligible to work in Canada and may apply by sending their CV's directly to careers@gowestgold.com